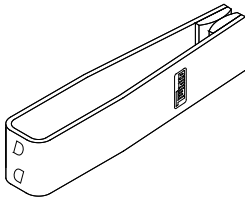


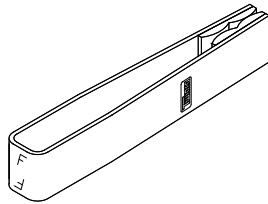


REPLACEMENT CONTACTS

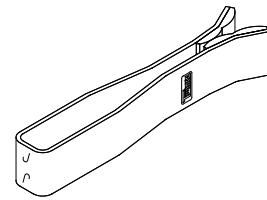
- Superior Quality
- Meets OEM Requirements
- NYCT Approved



Single Tip Contact Finger



Double Tip Contact Finger



Special Tip Contact Finger

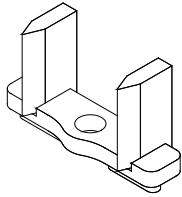
TWINCO Replacement Contact Fingers			
TwincO Part Number	Description	Overall Length	OEM Part Number
069-0942-1-N	Single Tip Finger, "G Contact"	1.66	51195-9-GR-7
069-0942-0-L	Single Tip Finger, "D Contact"	1.75	51195-9-GR-4
069-1056-0-0	Single Tip Finger, "E Contact"	2.94	51195-9-GR-6
069-1311-1-0	Single Tip Finger, "C Contact"	1.52	51195-9-GR-3
069-0942-0-M	Double Tip Finger, "H Contact"	2.10	51195-10-GR-3
069-0942-0-N	Double Tip Finger, "F Contact"	2.23	51195-10-GR-2
069-1073-0-0	Double Tip Finger, "B Contact"	2.35	51195-10-GR-1
069-1311-2-0	Double Tip Finger, "K Contact"	1.88	51195-10-GR-5
069-1057-0-0	Special Tip Finger, "J Contact"	2.22	51195-10-GR-4



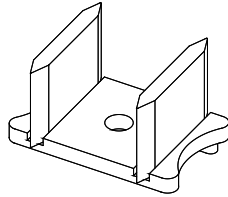
Certificate #: 2380
ISO 9001

PDS 0942-98 A

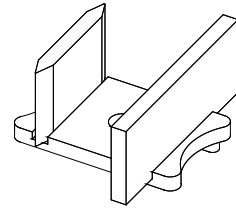
1 of 4



Single Wiper



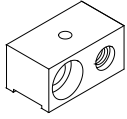
Double Wiper



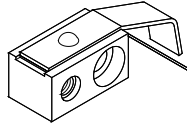
Special Wiper

TWINCO Replacement Wiper Contacts		
TwincO Part Number	Description	OEM Part Number
069-0942-0-C	Single Wiper Contact Block	54027-4-GR-1
069-0942-0-B	Double Wiper Contact Block	54027-5-GR-1
060-1055-0-0	Special Wiper Contact Block	54027-6-GR-1

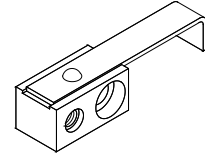
- Superior Quality
- Meets OEM Requirements
- NYCT Approved



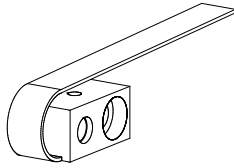
Contact Block



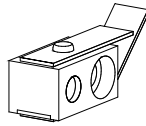
Two Finger Contact Spring



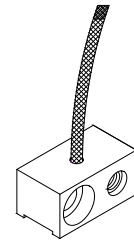
One Finger Contact Spring



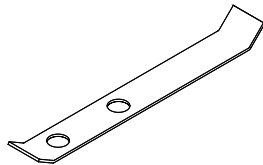
Long Contact Spring



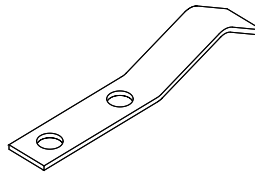
Short Contact Spring



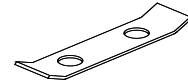
Terminal Connector



Contact Spring



Stop Spring



Contact Spring Washer

OEM Replacement Contacts		
Twinco Part Number	Description	OEM Part Number
069-1223-0-A	Contact Block	N/A
245-1788-2-0	Two Finger Contact Spring	N156367
245-1788-1-0	One Finger Contact Spring	N156377
069-1223-1-0	Short Contact Spring	N179246
069-1223-2-0	Long Contact Spring	N236209
245-1788-3-0	Terminal Connector, With Braid	N167538
245-1789-3-0	Contact Spring	M153495
245-1789-2-0	Stop Spring	M157743
245-1789-1-0	Contact Spring Washer	M187712

- Contact Blocks are made from precision machined brass alloy.
- Contact Springs are made from grain oriented grade A phosphorous bronze.
- Blocks & Springs are nickel plated for superior corrosion resistance.
- Assemblies are carefully soldered for electrical contact.
- Consult factory for special requirements.

